

iTradeCafe LLC – Instructions for Chart and Strategy Setup

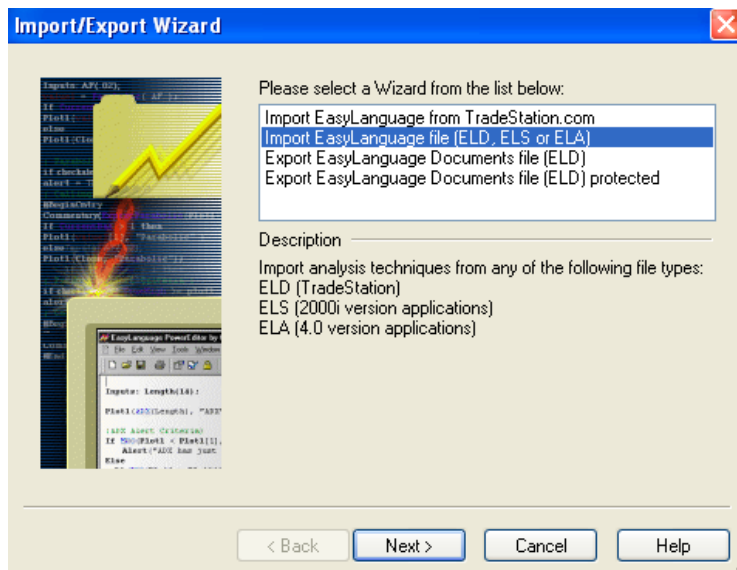
Before proceeding with the following instructions, please download the "iTradeCafe Monthly Strategy" the "iTradeCafe Monthly Chart" and the "GlobalVariable DLL" File to your desktop.

Once all files are downloaded to your desktop, copy the "GlobalVariable.dll" file to the **C Drive: Program Files\TradeStation 8.8\Program Folder**. This location will work for Windows XP, Vista or Windows Seven running on 32 bit systems. If you have a Vista or Windows Seven Platform running on a 64bit system... you would place the GlobalVariable.dll file in the **C Drive: Program Files (x86)\TradeStation 8.8\Program Folder**.

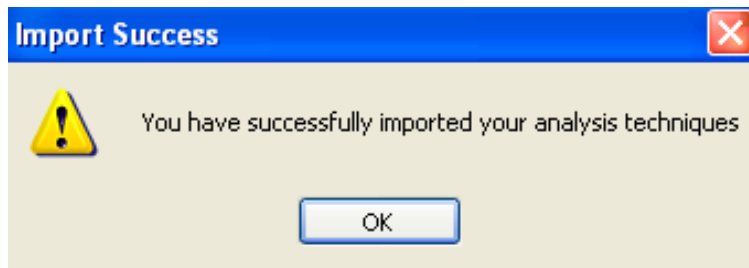
Once you've finished with that, launch TradeStation and proceed with the following steps.

- iTradeCafe Monthly Strategy (Import Into TradeStation Platform) -

- 1 – Go to the Menu Bar... Click File-Import/Export EasyLanguage... you will see the screen below:
- 2 – Highlight the second option "Import EasyLanguage File (ELD, ELS or ELA)" – Click "Next"



5 – Click “Next”, “Finish”, “Yes to all” or “OK” in order to proceed through all prompts until you have successfully imported the new Strategy and see the following prompt... Your iTradeCafe Monthly Strategy is now imported into the TradeStation Platform



- iTradeCafe Monthly Chart (Import Into TradeStation Platform) -

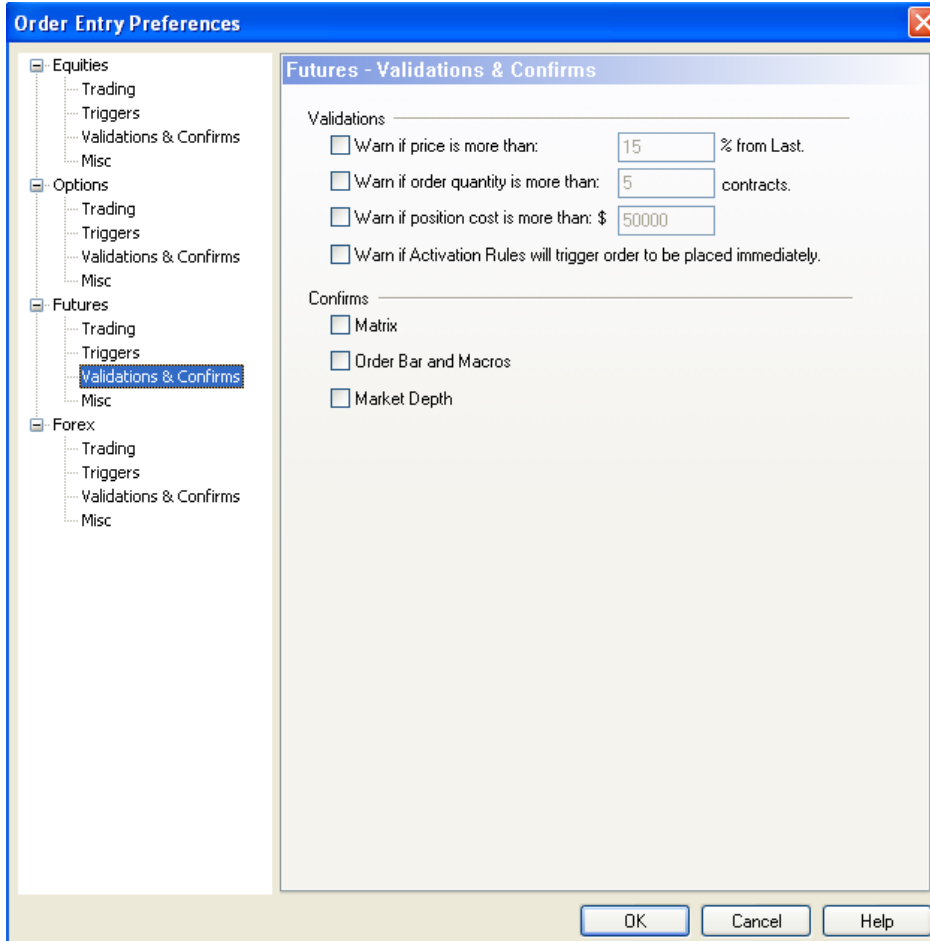
6 – Go to Menu Bar... Click File-Open Workspace

7 – Navigate to where your downloaded (Monthly Chart) file is located

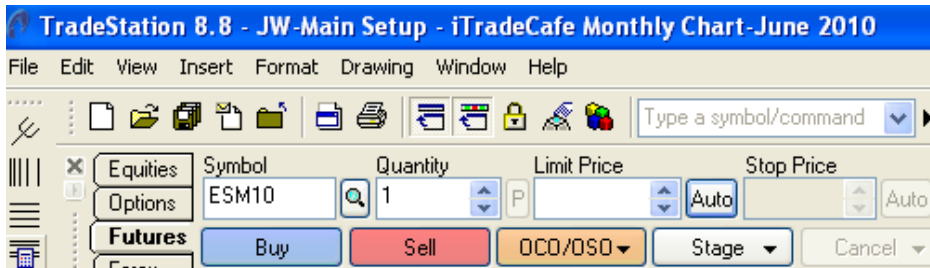
8 – Highlight the downloaded file “ITRADECAFE MONTHLY CHART-MONTH/YEAR”... Click “Open”. Your iTradeCafe Monthly Chart is now imported into the TradeStation Platform

- iTradeCafe Monthly Chart (Correct Settings) -

9 – Next, go to File, Preferences, TradeStation Order Entry... Within the Order Entry Preferences dialog, click "Futures" then "Validations & Confirms"... Make sure all boxes are Un-checked within this section. Your screen should look like the image below... Hit OK to exit.



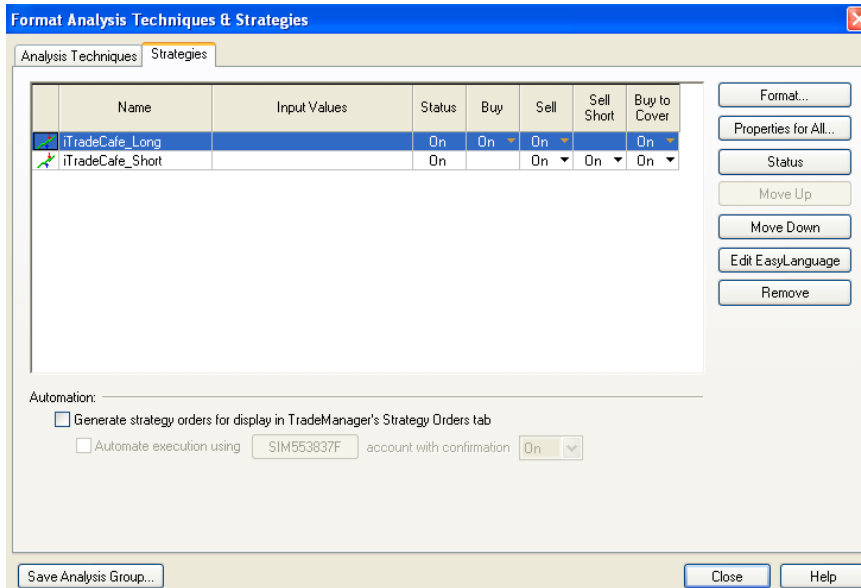
10 – Near the top of the TradeStation tool bar you will find an icon that looks like a "Padlock"... Click the Padlock icon then click the "Unlock All" drop down tab.



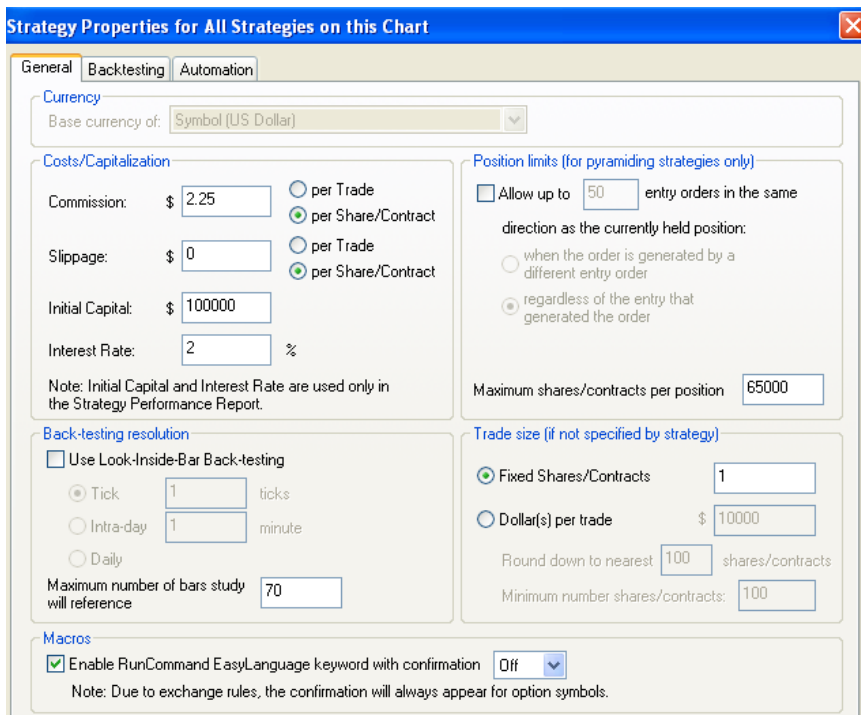
iTradeCafe LLC – Instructions For Engaging Strategy Automation

You're now ready to engage your Strategy into "Automation Mode".

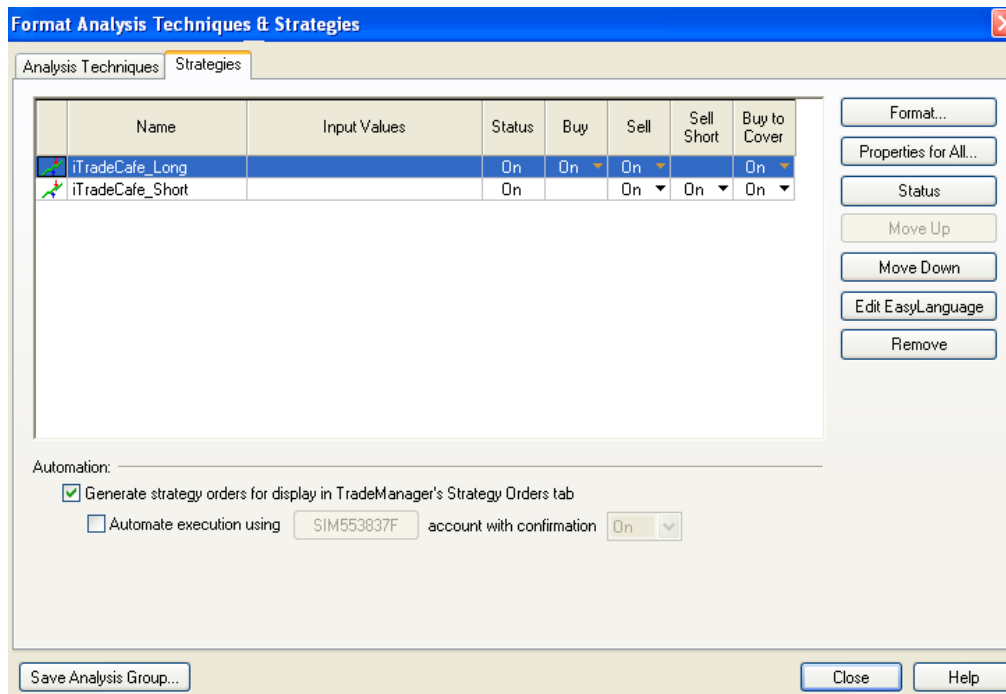
1 – Click within the open area of the current monthly contract chart... Go to the Menu Bar... Click Format-Strategy... you will see the screen below:



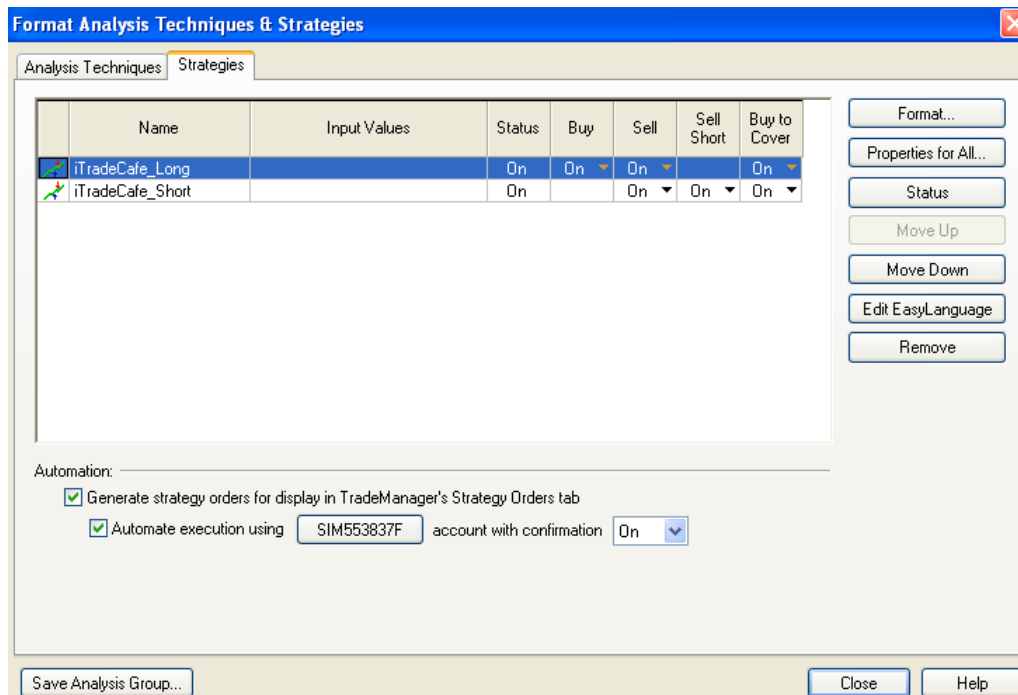
2 – Click "Properties for All"... Under the "General" tab and near the bottom of the screen check "Enable RunCommand EasyLanguage keyword with confirmation". Set the Confirmation drop down tab to "Off". Click "OK"... this will return you to the Format Strategies window.



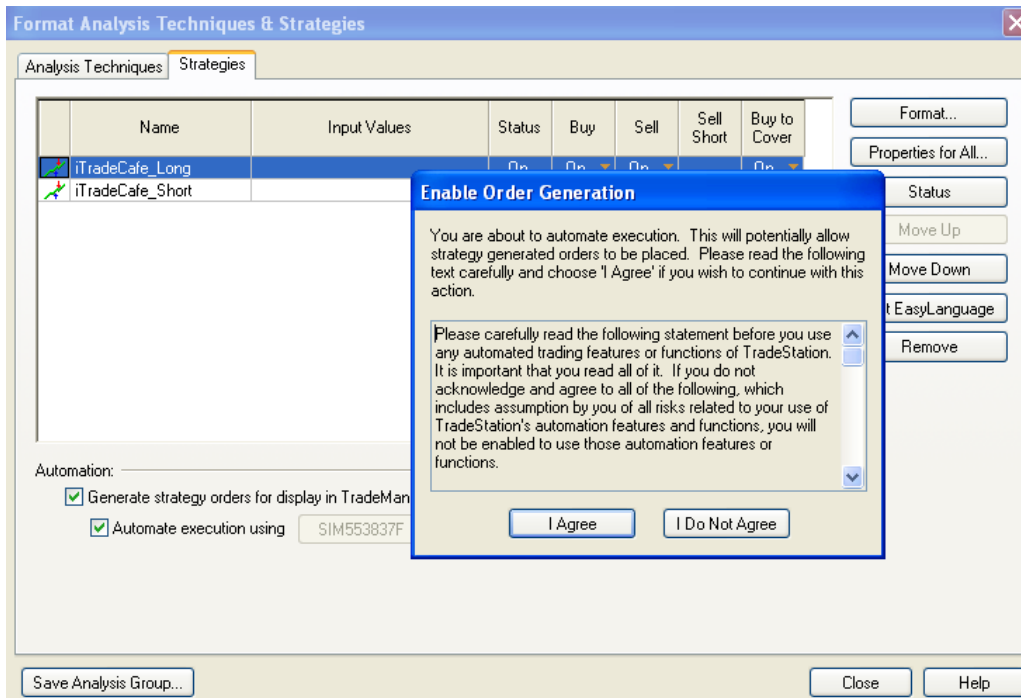
3 – Check the box “Generate strategy orders for display in TradeManager’s Strategy Orders tab”



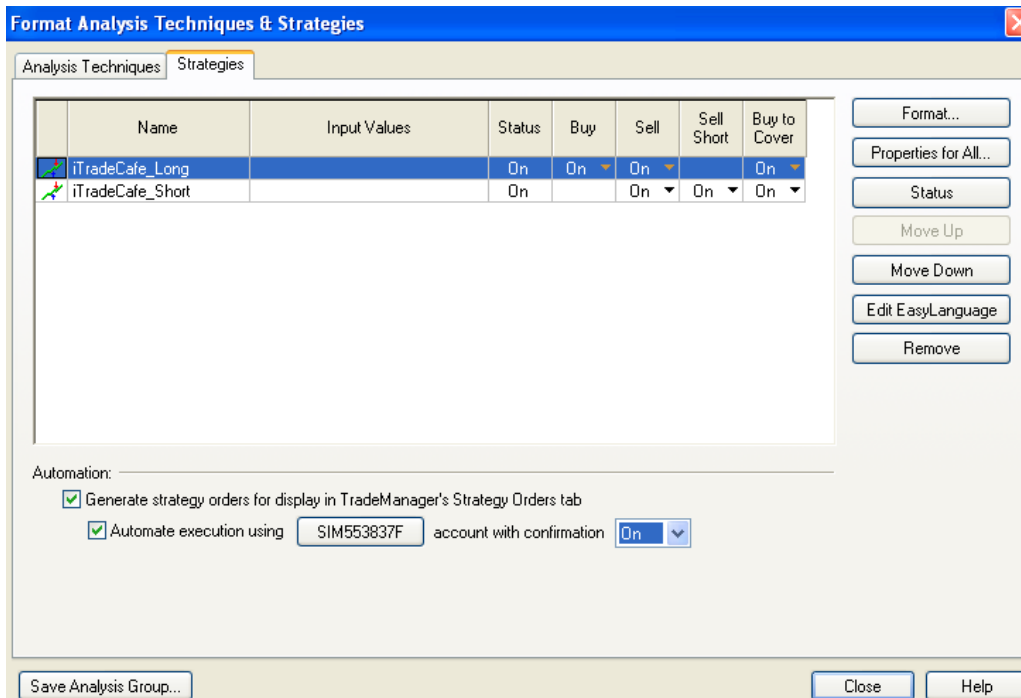
4 – Check the box “Automate execution using (xxxxxxx) account with confirmation”



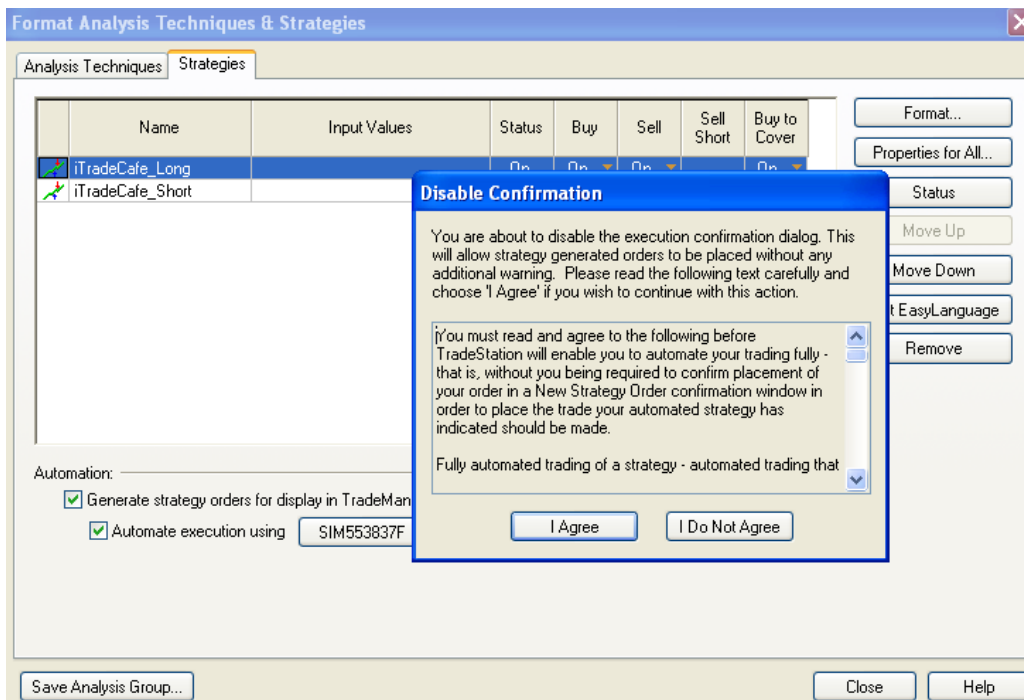
5 – The following prompt will appear... Click “I Agree”



6 – Change the drop down box currently set to “On”... to the “Off” position



7 – The following prompt will appear... Click “I Agree”



Your strategy is now in “Automation Mode”